

Date Revised: 04 / 2026
Product: BlueLine Standard
Document #: NFTDS_BlueLine_Standard_2026-04

RECOMMENDED APPLICATIONS

BlueLine Standard is used in gravity pipeline networks where a structural or semi-structural outcome is required, including:

- ▶ **Sewer mains and laterals**
Commonly affected by cracking, joint displacement, root intrusion, corrosion, and infiltration/exfiltration leading to blockages, leakage, and structural instability.
- ▶ **Stormwater pipelines**
Typically fail due to joint separation, cracking, deformation, sediment ingress, and collapse caused by ground movement, traffic loading, or long-term material degradation.
- ▶ **Vertical drain stacks**
Prone to corrosion, joint leakage, and cracking within walls or service risers, often resulting in water ingress, odour issues, and difficult to access failures.
- ▶ **Trade waste and industrial drainage**
Frequently degraded by chemical attack, elevated temperatures, abrasion, and aggressive effluent, leading to accelerated wall loss, leakage, and reduced service life.
- ▶ **Pool and marine pipelines**
Subject to chemical exposure, hydrostatic pressure, ground movement, and material fatigue, commonly resulting in leaks that are difficult to locate and disruptive to repair.
- ▶ **Electrical conduit**
Can suffer from cracking, joint failure, deformation, or water ingress due to ground movement or corrosion, compromising cable protection and increasing the risk of electrical faults or service failure.

HOST PIPE MATERIALS

Compatible with a wide range of host pipe materials, including:

- ▶ Clay (earthenware)
- ▶ Concrete
- ▶ PVC and UPVC
- ▶ Cast iron and ductile iron
- ▶ Steel and Copper
- ▶ Fibre-reinforced composite pipes

APPROVALS, CERTIFICATIONS & SPECIFICATIONS

- ▶ WMTS-518:2017
- ▶ AS/NZS 2566.1
- ▶ ASTM F1216
- ▶ ASTM F1743
- ▶ AS3500



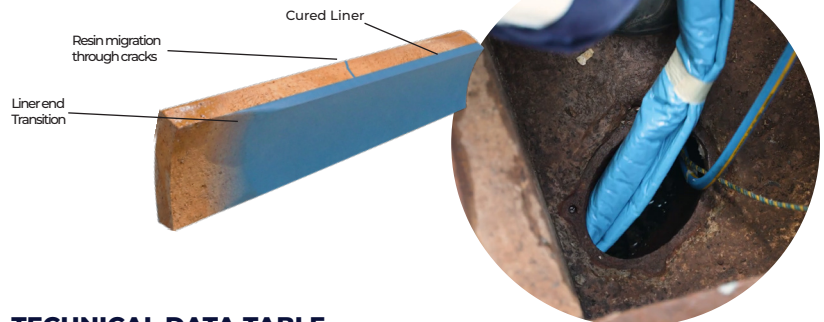
scan or click for more information

TECHNICAL DATA SHEET

BLUELINE - STANDARD LINER

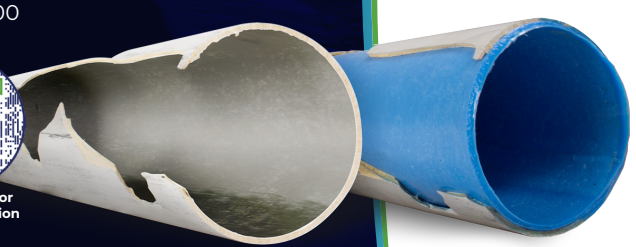
BlueLine Standard is Nuflow's epoxy resin-based cured-in-place pipe (CIPP) lining system designed for the structural rehabilitation of non-pressurised pipelines. The system forms a continuous, jointless composite liner within the existing host pipe, restoring structural integrity and extending service life without excavation.

BlueLine Standard is suited to gravity drainage applications where corrosion, cracking, joint failure, root intrusion, or general deterioration has compromised the host pipe.



TECHNICAL DATA TABLE

TYPICAL PROPERTIES	VALUE
Substrate	Standard Liner - Non-woven staple fibre geofabric, saturated & cured with Standard Part A & Standard Part B Normal Cure
Wall Thickness	4.0mm (+/- 0.5)
Diameter Range	DN040 ~ DN1800
E-Module Short Term ISO 178 / ASTM D790	2,350 MPa
E-Module Long Term ISO 178 / ASTM D790 / 50-years	1,175 MPa
Flexural Strength ISO 178 / ASTM D790	55 Mpa
Tensile Strength ISO 527-4/5 / ASTM D3039	45 Mpa
Max Service Temp	55°C with Standard BlueLine <i>see HTAR TDS for higher temperatures</i>
Min application temp	5°C
Chemical Resistance	Suitable for typical sanitary sewer flows (PH1 - PH12) <i>see HTAR TDS for more aggressive environments</i>
Hazen Williams Coefficient	140 (c)
Manning's Roughness Coefficient	0.010 - 0.012 (n)
Product Warranty	Up to 50 years Subject to Terms & Conditions.



Structural Performance

Blueline Standard provides a structural composite liner capable of restoring or enhancing the load-bearing capacity of deteriorated gravity pipelines.

Key performance characteristics include:

- ▶ High flexural strength and modulus through composite fibre reinforcement
- ▶ Resistance to external soil and traffic loads when designed accordingly
- ▶ Seamless liner eliminating joint-related failure points
- ▶ Structural continuity across cracks, fractures, and missing sections

Structural performance is governed by:

- ▶ Host pipe condition and geometry
- ▶ Liner thickness and composite design
- ▶ Length of liner or patch
- ▶ Applicable design standards and safety factors

Liner thickness and design classification (structural or semi-structural) are determined on a project-specific basis using recognised design methodologies.



Hydraulic Performance

The cured liner provides a smooth internal surface that typically maintains or improves hydraulic capacity compared to the deteriorated host pipe.

Hydraulic benefits include:

- ▶ Reduced surface roughness
- ▶ Elimination of offsets, joint steps, and root intrusions
- ▶ Improved flow efficiency and reduced risk of blockages

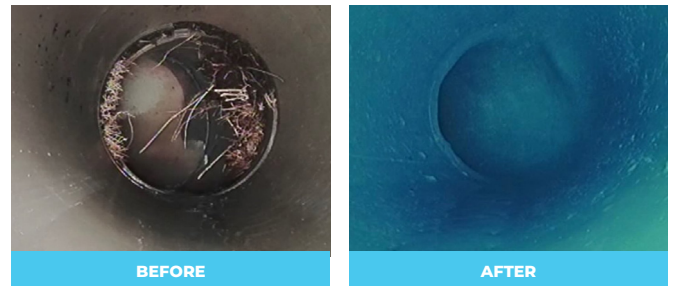
Any reduction in internal diameter is accounted for during design and is generally offset by improved flow characteristics.

Durability and Service Life

Blueline Standard liners are designed for long-term service in aggressive wastewater and drainage environments.

- ▶ Resistance to corrosion, abrasion, and chemical attack
- ▶ High temperature tolerance (subject to resin selection)
- ▶ Immunity to root intrusion and microbiologically influenced corrosion (MIC)

When designed and installed in accordance with specifications, Blueline Standard systems offer a design life of up to 50 years, supported by manufacturer warranty and documented quality assurance.



Installation Performance

Blueline Standard is installed using trenchless CIPP methods via existing access points, minimising disruption to surface assets and operations.

- ▶ Ambient, heat, steam, or UV-assisted curing options
- ▶ Capability to install through multiple bends, traps, junctions, and vertical sections
- ▶ Suitability for live or bypassed flow conditions (project dependent)
- ▶ Rapid return to service following cure and final inspection

Installations allow critical defects to be addressed quickly and efficiently, making Blueline suitable for reactive repairs, condition-based maintenance programs, and staged rehabilitation strategies.

1 INSPECTION



2 CLEANING



3 INSTALLATION



4 COMPLETE

